



U.S. Department of Interior
Bureau of Land Management

East Alaska RMP Amendment

Environmental Assessment Public Meeting — June 17, 2021



**** Presentations start at 1:00 and 6:00 p.m.****



Meeting Agenda

- Welcome and logistics (10 minutes)
- Presentation (20 minutes)
- Break (5 minutes)
- Public input (may be time limited)



Project Contacts:

- Glennallen Field Office, Field Manager:
Marnie Graham mgraham@blm.gov
- Project Manager:
Tina McMaster-Goering tmcmastergoering@blm.gov
- Public Affairs Specialist:
Melinda Bolton mbolton@blm.gov
- *Glennallen Field Office Phone: 907-822-3217*



Logistics

1. Attendee microphones & cameras turned off
2. Meeting is recorded
3. Ask questions in "Q & A" box
4. Verbal comments may be limited to 3 minutes per person, depending on attendance.
5. Written comments can be submitted after this presentation.
6. Links provided in "Chat" box



How to use Q & A:

On Zoom –

- Use the “Q&A” icon at the bottom of your Zoom screen to write and send questions to the host of the meeting.
- You will be answered either verbally or in the Q&A box.

On the phone -

- Press *9 to “raise your hand” and let staff know you have a question. Someone will unmute you so you can speak.
- You will be identified by the last four digits of your phone number.
- You can unmute yourself by pressing *6 on your phone keypad.



Background

- The 2019 Dingell Act (Section 1113) directed the BLM to prepare a Chugach Region Land Study, which shall:
 - “...*identify sufficient acres of accessible and economically viable Federal land that can be offered in exchange for CAC land identified by CAC as available for exchange...*”
- Currently, the 2007 RMP prohibits land exchanges.
- Amendment would ***not*** authorize a land exchange.



Proposed Action

- Amend the East Alaska RMP to include areas of accessible and economically viable Federal Land that could be offered for exchange in the future.
- The **decision to be made** is whether BLM-managed public lands within the East Alaska planning area could be made available for an exchange, and under what terms and conditions.



Who is involved?

- Lead Agency: Bureau of Land Management
- Cooperating Agency: City of Valdez
- Alaska Native Tribes
- Alaska Native Corporations

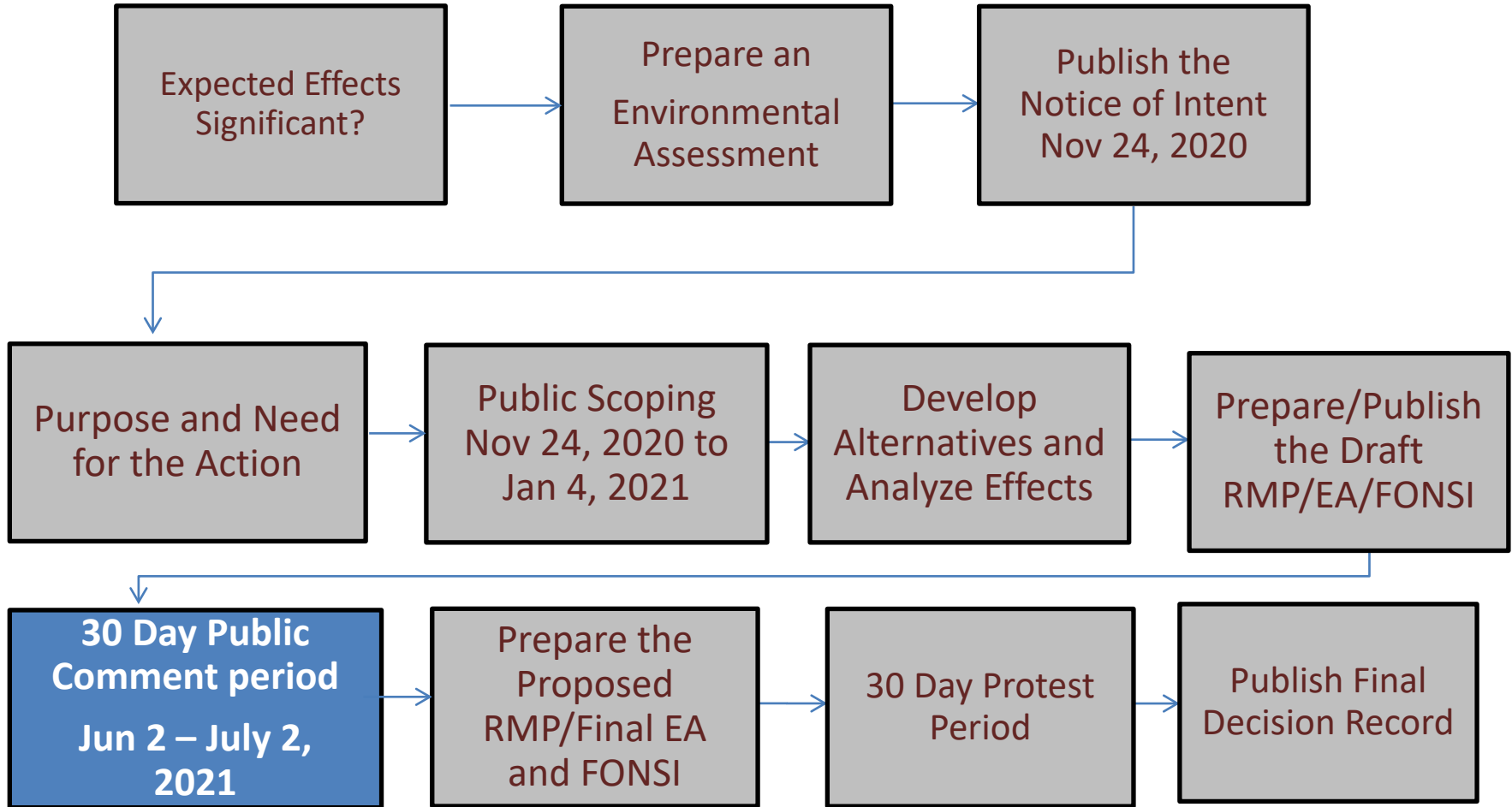


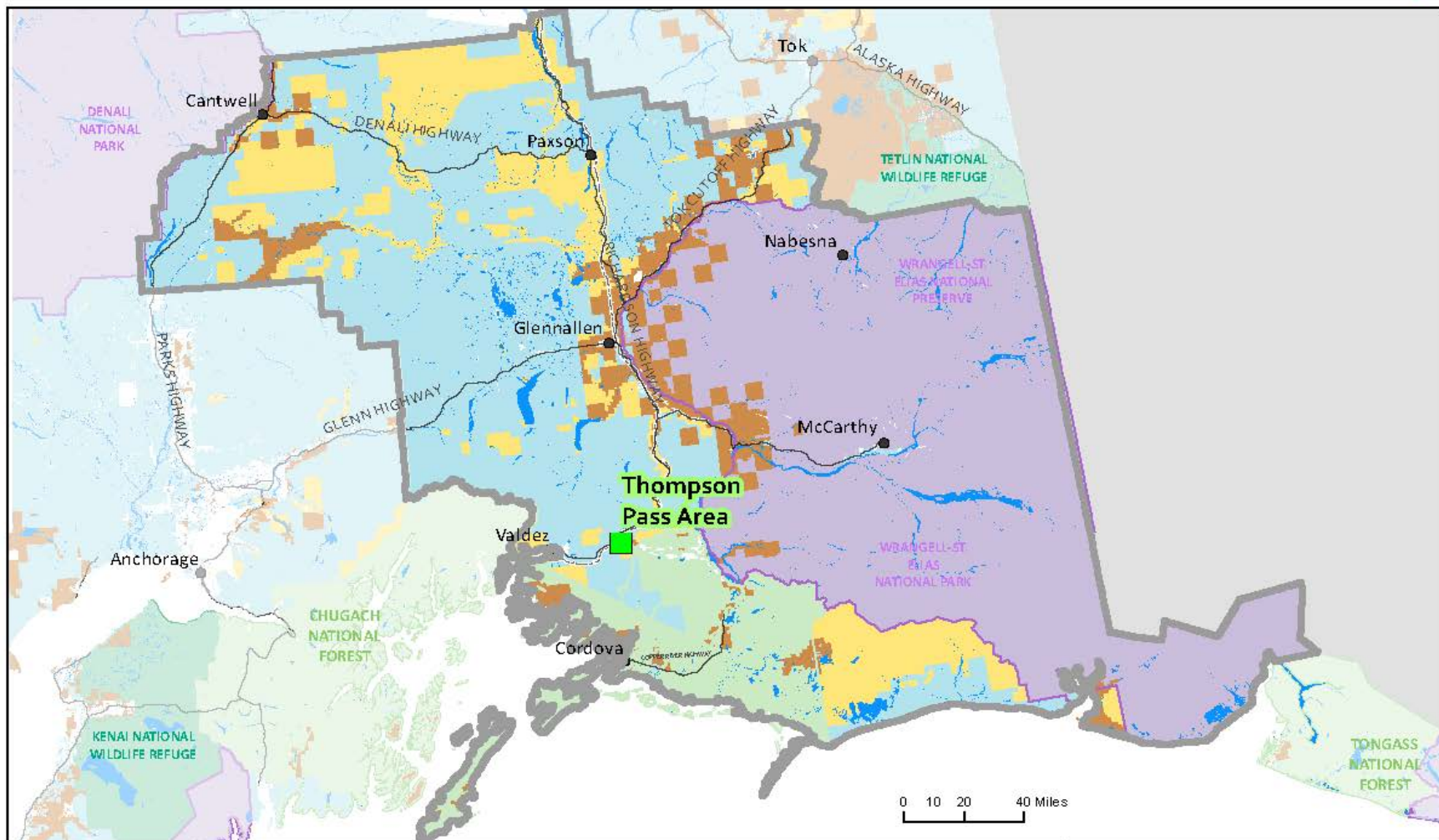
Requirements

- The Federal Land Policy Management Act (FLPMA)
- The National Environmental Policy Act (NEPA)
- Section 106 of the National Historic Preservation Act
- The Alaska National Interest Lands Conservation Act
ANILCA Section 810 – A Subsistence Evaluation



Overview of NEPA Process





- East Alaska RMP Boundary
- Land Exchange Area
- Trans-Alaska Pipeline (TAPS)

- Administered Lands**
- Bureau of Land Management
 - National Park Service
 - Native Lands
 - State
 - Fish and Wildlife Service
 - Forest Service
 - Water

Disclaimer: No warranty is made by the Bureau of Land Management as to the accuracy, reliability, or completeness of these data for individual or aggregate use with other data. Original data were compiled from various sources. This information may not meet National Map Accuracy Standards. This product was developed through digital means and may be updated without notification. The information displayed on this map should be used for graphic display only. For official land status information, refer to cadastral survey plans, the 1:250,000 scale, and land status case files.

Print date: 1/14/2021





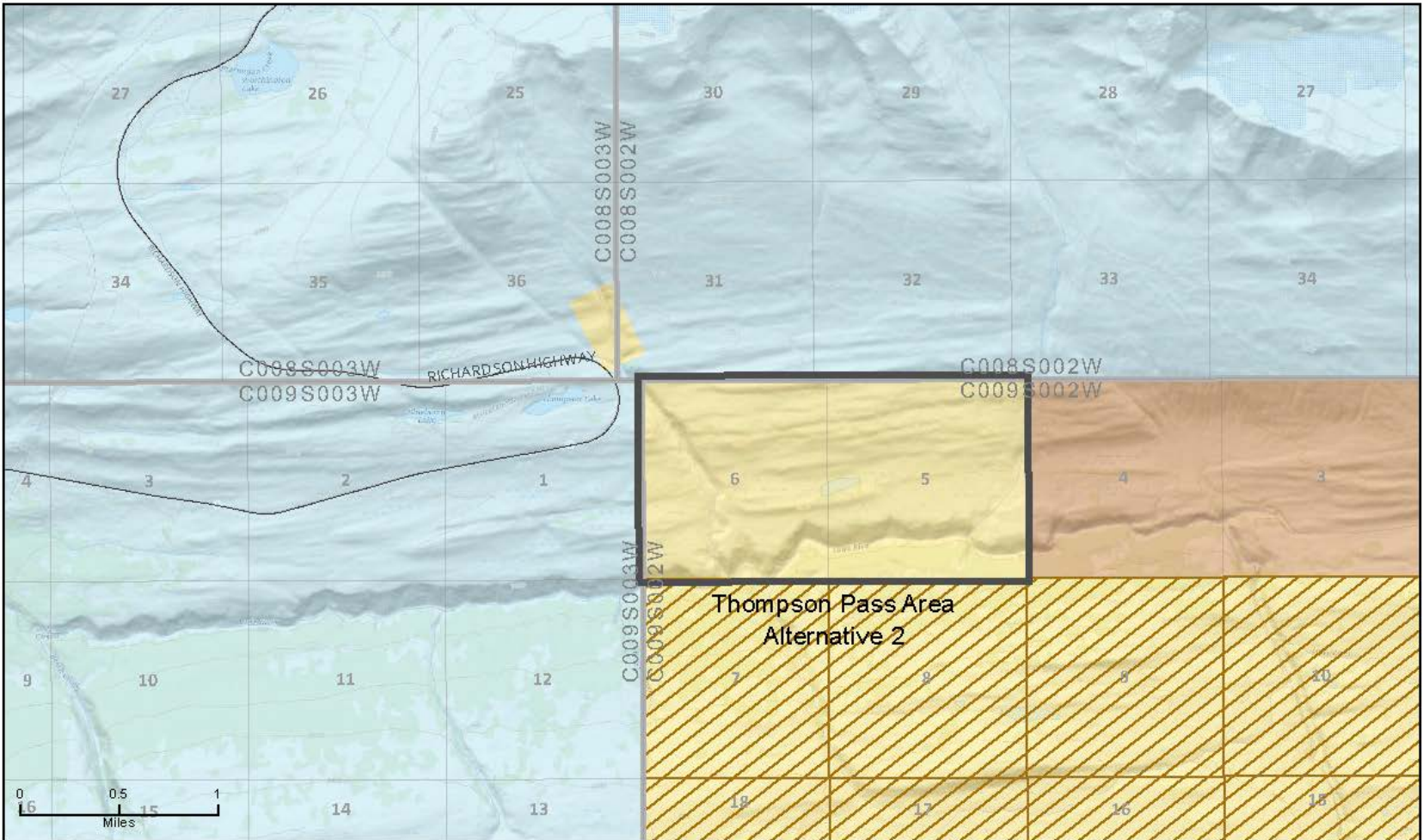
Purpose and Need

- The **purpose** of this plan amendment is to identify lands the BLM could make available for exchange within the East Alaska planning area near Thompson Pass in order to comply with the Dingell Act.
- The **need** is to amend the 2007 RMP to determine whether lands within the planning area can be made available for an exchange.



Summary of the Alternatives

- No Action Alternative, Alternative 1 - the East Alaska RMP would continue to prohibit additional land exchanges.
- Alternative 2 - This alternative could amend the RMP to make two parcels of land available for potential exchange.
- Alternative 3 - This alternative could amend the RMP to make available only one parcel of land.

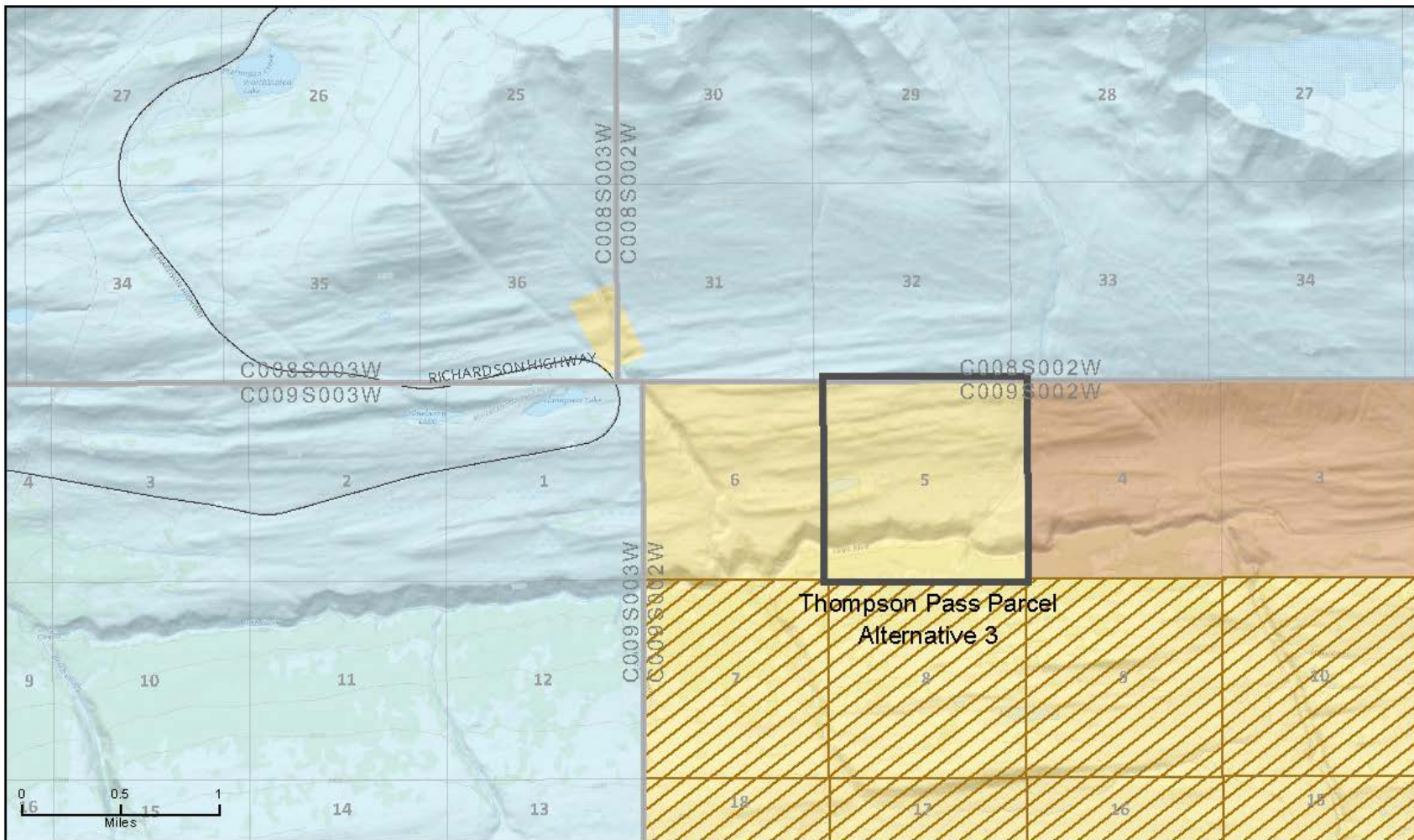


- Administered Lands**
- Bureau of Land Management
 - State
 - Native Lands
 - Native Selected
- Project Area**
- Section
 - Township

Base Map Layer Credits: U.S. Department of the Interior, Bureau of Land Management, National Geographic, National Hydrography Dataset, National Land Cover Database, National Wetlands Inventory, National Transportation Dataset, U.S. Geological Survey, U.S. Census Bureau, TIGER/Line data, USFS Road Data, National Earth Data, U.S. Department of State, International Information Unit, and NOAA National Centers for Environmental Information, U.S. Coastal Relief Model. Data retrieved May, 2020.

Disclaimer: No warranty is made by the Bureau of Land Management as to the accuracy, reliability, or completeness of these data for individual or aggregate use without other data. Original data were compiled from various sources. This information may not meet National Map Accuracy Standards. This product was developed through digital means and may be updated without notification. The information displayed on this map should be used for graphic display only. For official land status information, refer to cadastral survey plans, Master Title Plans, and land status case files.





- Administered Lands
- Bureau of Land Management
 - State
 - Native Lands
 - Native Selected

- Project Area (C009S002W section 5)
- Section
- Township

Service Layer Credits: USGS The National Map; National Boundaries Dataset; 2DEP Elevation Program; Geographic Names Information System; National Hydrography Dataset; National Land Cover Database; National Structure Dataset; and National Transportation Dataset; USGS Global Data Symbology; U.S. Census Bureau TIGER/Line data; USFS Road Data; National Earth Data; U.S. Department of State Humanitarian Information Unit; and NOAA National Centers for Environmental Information, U.S. Coastal Relief Model. Data as of the May, 2020.

Disclaimer: No warranty is made by the Bureau of Land Management as to the accuracy, reliability, or completeness of these data for individual or aggregate use with other data. Original data were compiled from various sources. This information may not meet National Map Accuracy Standards. This product was developed through digital means and may be up dated without notification. The information displayed on this map should be used for graphic display only. For official land status information, refer to cadastral survey plans, the 1:250,000 scale, and land status case files.





Providing Formal Comment

- Online: NEPA Register project page - <https://eplanning.blm.gov/eplanning-ui/project/2003781/570>
- Mail:
Bureau of Land Management
ATTN: East Alaska RMP Amendment/EA
222 W. 7th Ave., Stop 13
Anchorage, Alaska 99513
- Verbally at today's Public Meeting
- **Comment deadline July 2, 2021 at 10 pm (Alaska)**



Substantive Comment Guidance

- Provide new information about the proposed project or suggest a new alternative
- Present changes or revisions to one of the analyzed alternatives
- Suggest alternate methodologies for analysis and the reason(s) why they should be used
- Make factual corrections or identify sources of credible research or data
- Question, with reasonable basis, the adequacy of, methodology for, or assumptions used for the environmental analysis



Providing a comment today

- Use the “raise hand” feature at the bottom of your participants list or, if you are calling in through the phone, press *9 to “raise hand.”
- The moderator will then unmute you so that you can offer your comment.
- Please spell out your full first and last name before you provide your comment.
- You may be limited to 3 minutes to offer your comment. The facilitator will prompt you to finish your comment once you have reached the time limit.



Written comment submission:

- Online: NEPA Register project page -
<https://eplanning.blm.gov/eplanning-ui/project/2003781/570>
- Mail:
Bureau of Land Management
ATTN: East Alaska RMP Amendment/EA
222 W. 7th Ave., Stop 13
Anchorage, Alaska 99513
- Verbally at today's Public Meeting
- **Comment deadline July 2, 2021, at 10 pm (Alaska)**



BREAK

Hands up for speakers?